

# **CITY OF LONGMONT**

# **UPDATE ON OIL AND GAS DRILLING**

# **UNDER UNION RESERVOIR**

CITY COUNCIL STUDY SESSION

AUGUST 7, 2018

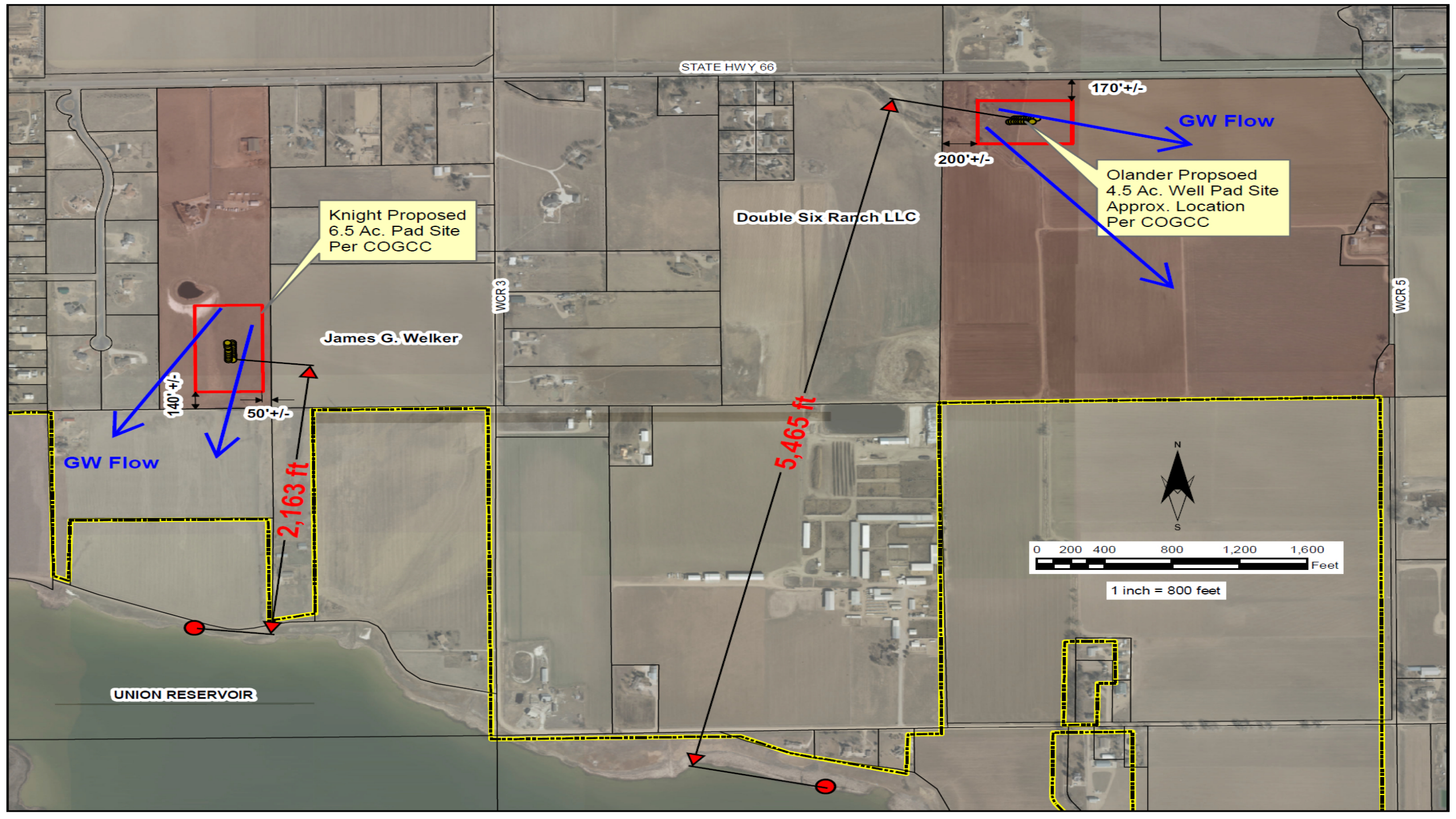


# AGENDA

- Staff to report on research of existing studies
- Staff contacted multiple reservoir/ditch operators throughout northern Colorado
- Environmental consultant provided feedback about the risks and continued monitoring of Knight and Olander locations
- Staff recommendations going forward

# EPA STUDY RESULTS & RECOMMENDATIONS

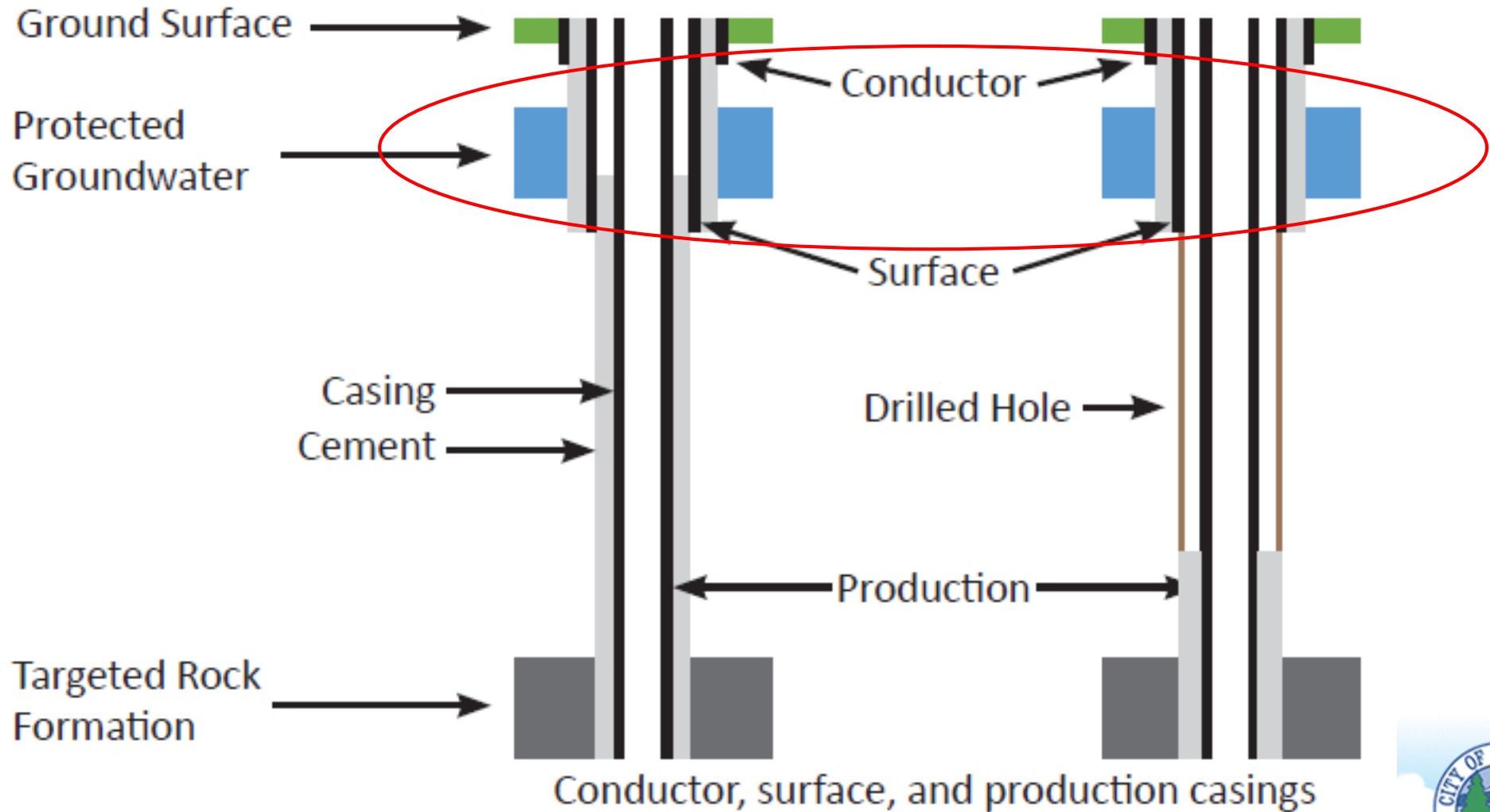
- In 2016, EPA released: *Hydraulic Fracturing for Oil and Gas: Impacts from the Hydraulic Fracturing Water Cycle on Drinking Water Resources in the United States*
- Complete study is available on EPA website:  
<https://cfpub.epa.gov/ncea/hfstudy/recordisplay.cfm?deid=332990>
- Staff reviewed the conclusions and recommendations included in the Executive Summary
- The prevailing finding of the study is that there is no widespread impacts of hydraulic fracturing, study conclusions identified that level of risk to surface reservoirs is minimal



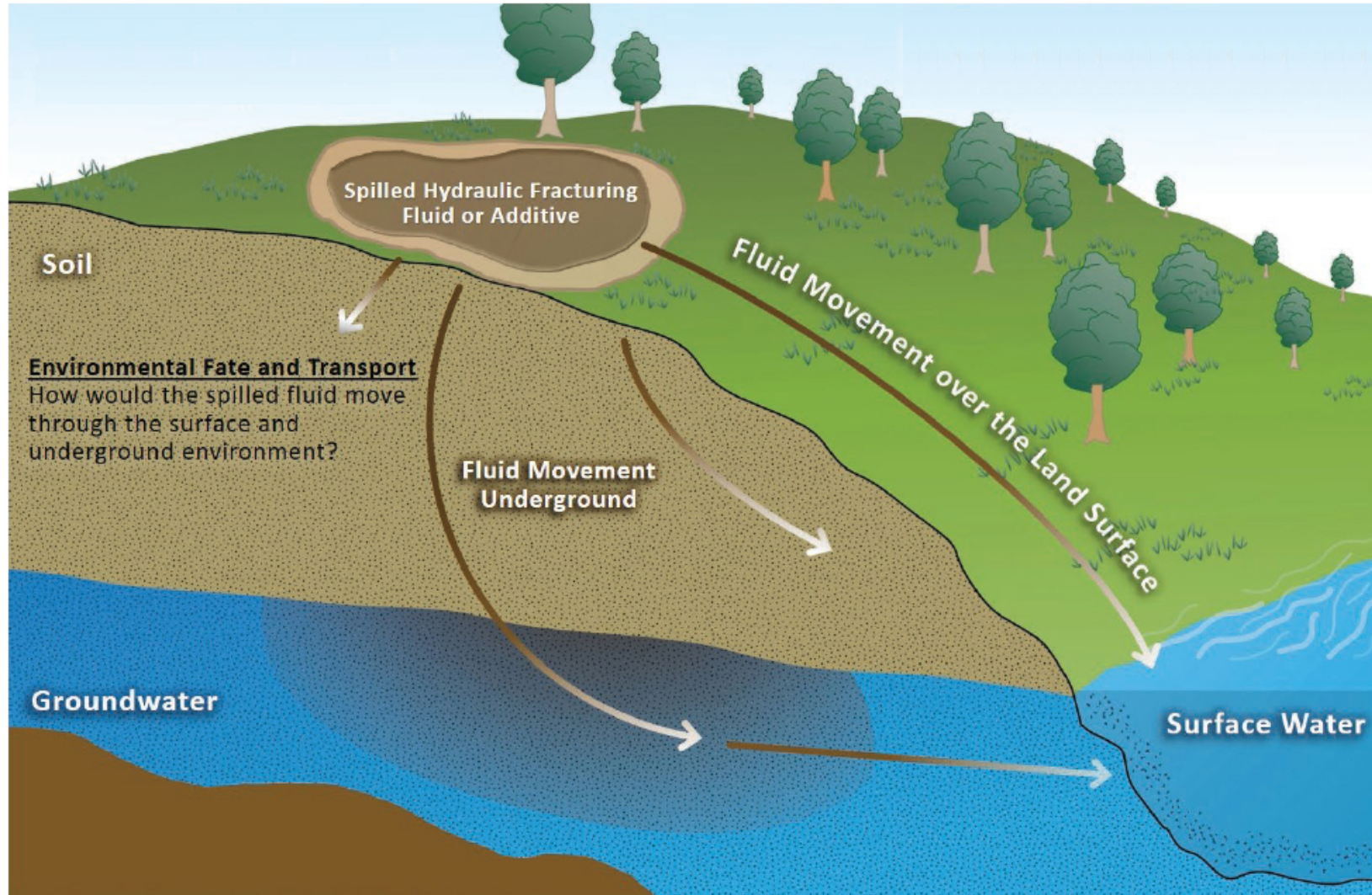
# EPA STUDY RESULTS & RECOMMENDATIONS

- Most likely and severe impacts identified in the study:
  - Water withdrawals for hydraulic fracturing
  - Disposal of inadequately treated fracturing wastewater to surface waters
  - Disposal or storage of fracturing wastewater in unlined pits
  - \*Injection of fracturing fluids in wells resulting from a failure of wellbore integrity\*
  - \*Surface spills during hydraulic fracturing that result in high volume and/or concentrations\*
- Staff recommends establishment of baseline conditions at Union Reservoir, and continued monitoring for the duration of oil and gas operations

# EPA STUDY RESULTS & RECOMMENDATIONS



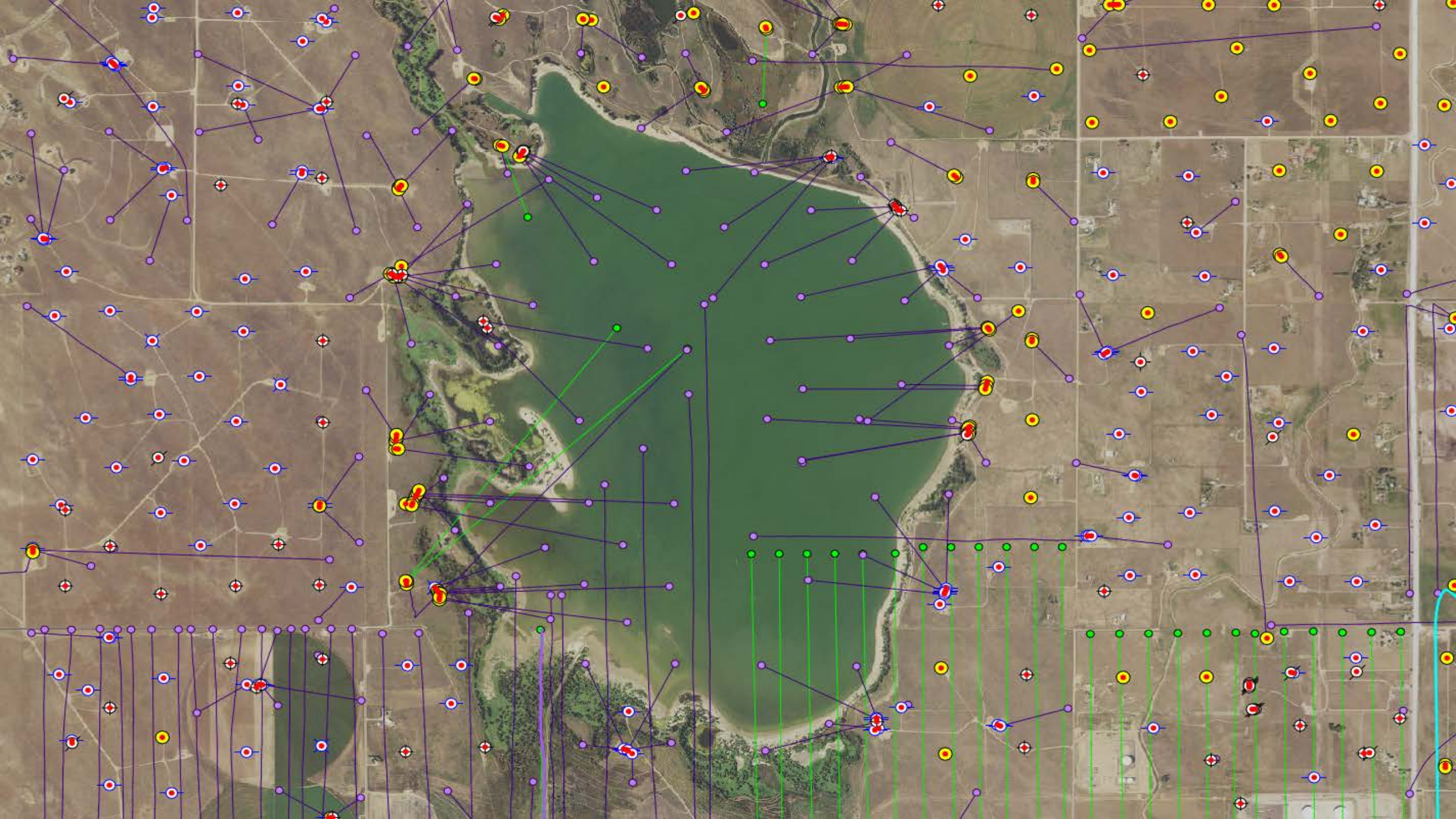
# EPA STUDY RESULTS & RECOMMENDATIONS



Milton Reservoir







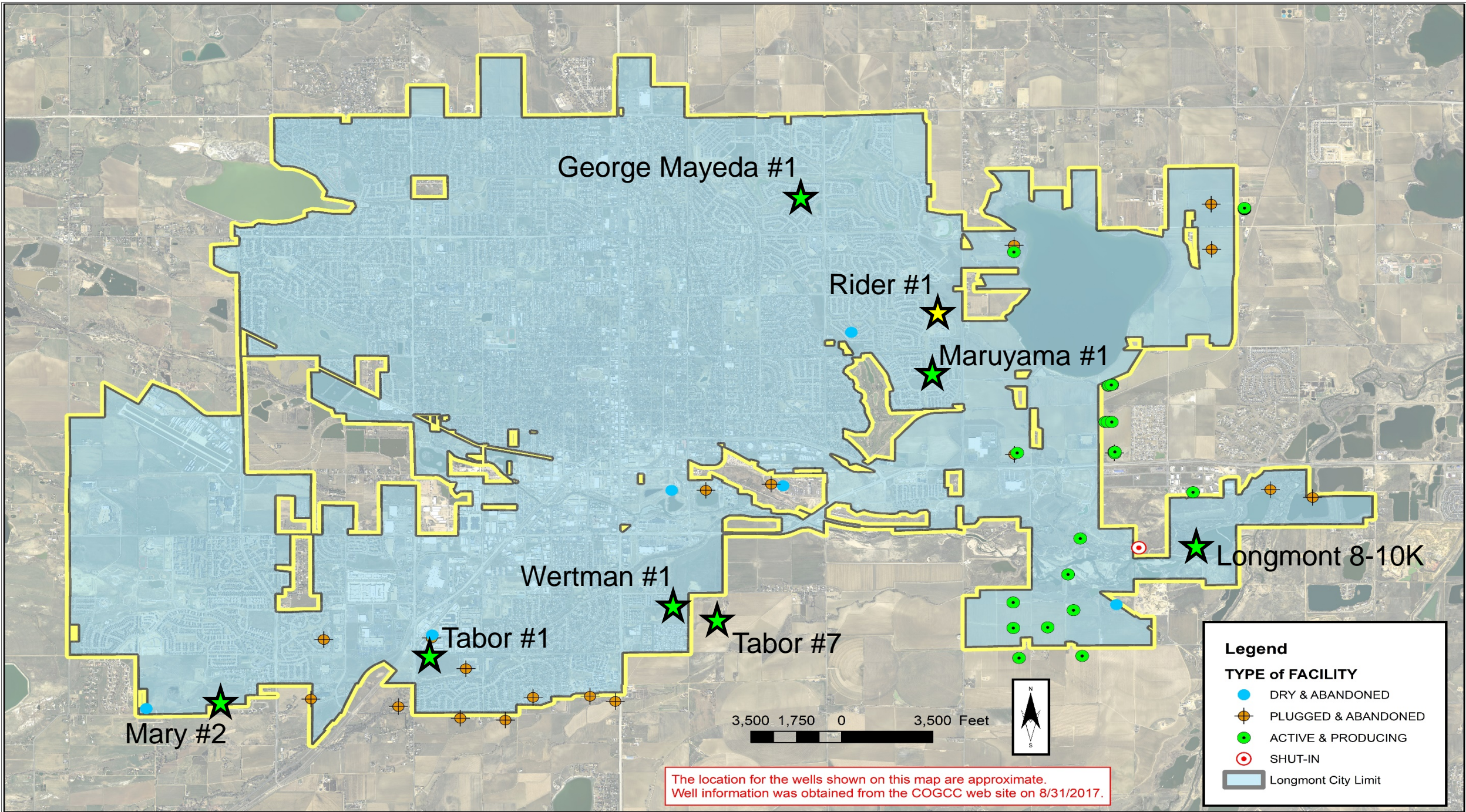
Foster Reservoir





# BASELINE & ONGOING INVESTIGATION ELEMENTS

- Continued Bac-T testing at swim beach
- Pull and analyze multiple samples from Union Reservoir
- After substantial storm events, pull and analyze samples from Oligarchy Ditch and Union Reservoir Drainage Basin
- Perform initial investigation at drill sites before mobilization
- Options for ongoing monitoring and evaluation



# QUESTIONS?

